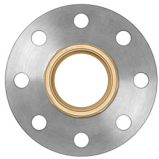




**90049**  
**RN**

Gewindeflansch, rund



<b>G</b>	<b>DN</b>	<b>Mat.</b>	<b>Art. Nr</b>
1	25	Inox	90049.23
1 1/4	32	Inox	90049.24
1 1/2	40	Inox	90049.25
2	50	Inox	90049.26
2 1/2	65	Inox	90049.27
3	80	Inox	90049.28
4	100	Inox	90049.29*

\* nur solange Vorrat